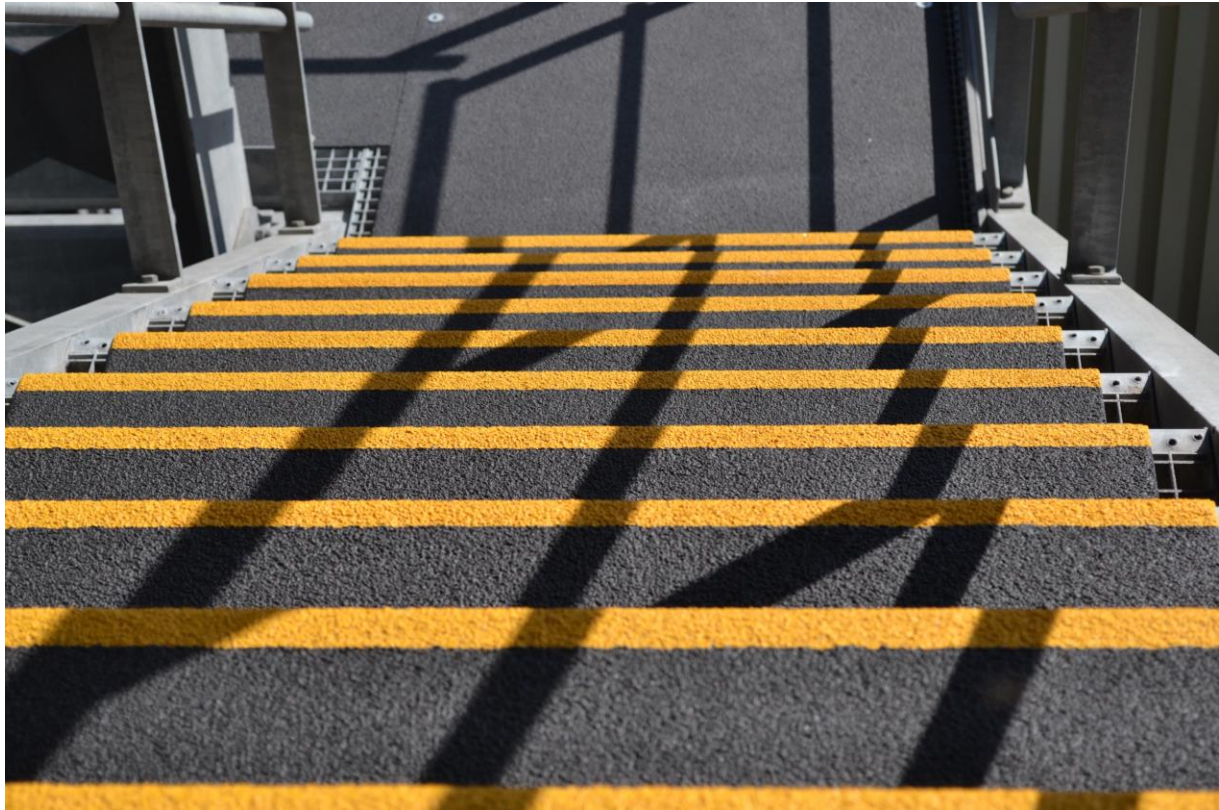


SFS GRP Antislip stair nosing profiles

VER 01-E-08.2022 | © SFS Safety Flooring Systems



Properties



Description / Field of application

GRP stair treads are made of polyester reinforced with fiberglass (GRP) and an overlying aluminum grain. By using these high quality materials, GRP stair tread profiles are not only very strong and resilient, but also very light and easy to work with. They are available in black and yellow (other colors on request) as well as four different grain sizes and can also be fully custom ordered. Furthermore, they are extremely stable, completely splinter and crack resistant as well as weather resistant. GRP stair tread profiles thus provide a durable solution for dangerous, slippery stairs and are suitable for many applications. They still ensure their anti-slip properties even in winter, as ice and snow do not adhere to the material.

Produktvorteile

- Flexural strength can be increased by adding woven reinforcement if required.
- Unlike other plastic glazing products, GRP does not drip, melt or soften in the event of fire.
- Compared to many other plastics, GRP has minimal expansion and contraction properties and will not bend or warp at extreme temperatures.
- GRP is up to seven times stronger than mild steel on a weight basis.

Technical Data

Colour	Black-yellow
Material	Glass fiber reinforced plastic
Thickness (installed)	from 2 mm
Weight (installed)	approx. 6800 g/m ² (3,5 mm Thickness)
UV-resistance	Good

Storage and application instructions

The SFS GRP anti-slip stair profiles are fastened with screws and dowels. Mounting is also possible with mounting adhesive. This can also be used to equip slightly uneven surfaces or gratings. The adhesive also serves as impact sound insulation. For bonding, please observe the preparation of surfaces in our installation instructions for anti-slip coverings. On surfaces that are difficult to bond, such as concrete, wood or certain plastics and paints, we recommend fastening with screws. To clean the profiles, please do not use abrasive cleaners, strong solvents, or strongly alkaline or acidic cleaning agents. Information about the available delivery forms and motives as well as about the purchase of spare parts is available on request.

Our above application advice is given to the best of our knowledge and represents our current experience. Since the use of our products is beyond our control, it is your own responsibility. All information about our products must be coordinated with the local conditions and the materials used in your application. Perform your own tests prior to use to determine suitability and consumption. All questions of warranty and liability for this product are governed by our current terms and conditions of sale, unless otherwise provided by law. We regard all technical data sheets of our products as our intellectual property. Their use is only permitted with our consent. With the publication of this product information, previous versions lose their validity.